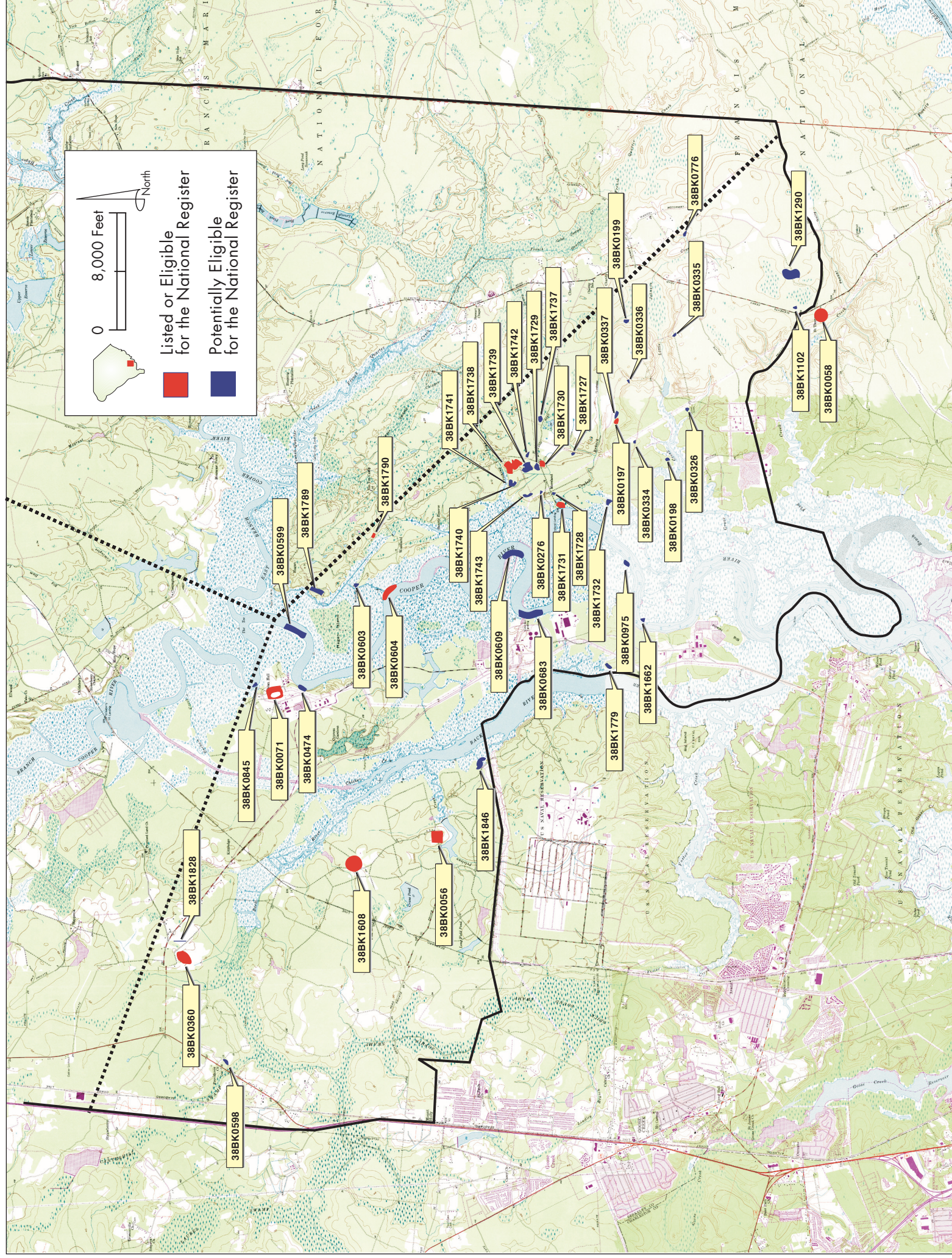


Figure 17
Locations of Archaeological Sites Listed, Eligible, or Potentially Eligible for the National Register in the Lower West Branch of the Cooper River Valley



Source: Dept. of Natural Resources, Berkeley County; South Carolina, Quads; Mt. Holly 1957 (PR1979), Kittredge 1950 (PR1979), Huger 1950 (PR 1971), Ladson 1958 (PR 1979), North Charleston 1958 (PR1979), Cainhoy 1958 (PR1971)