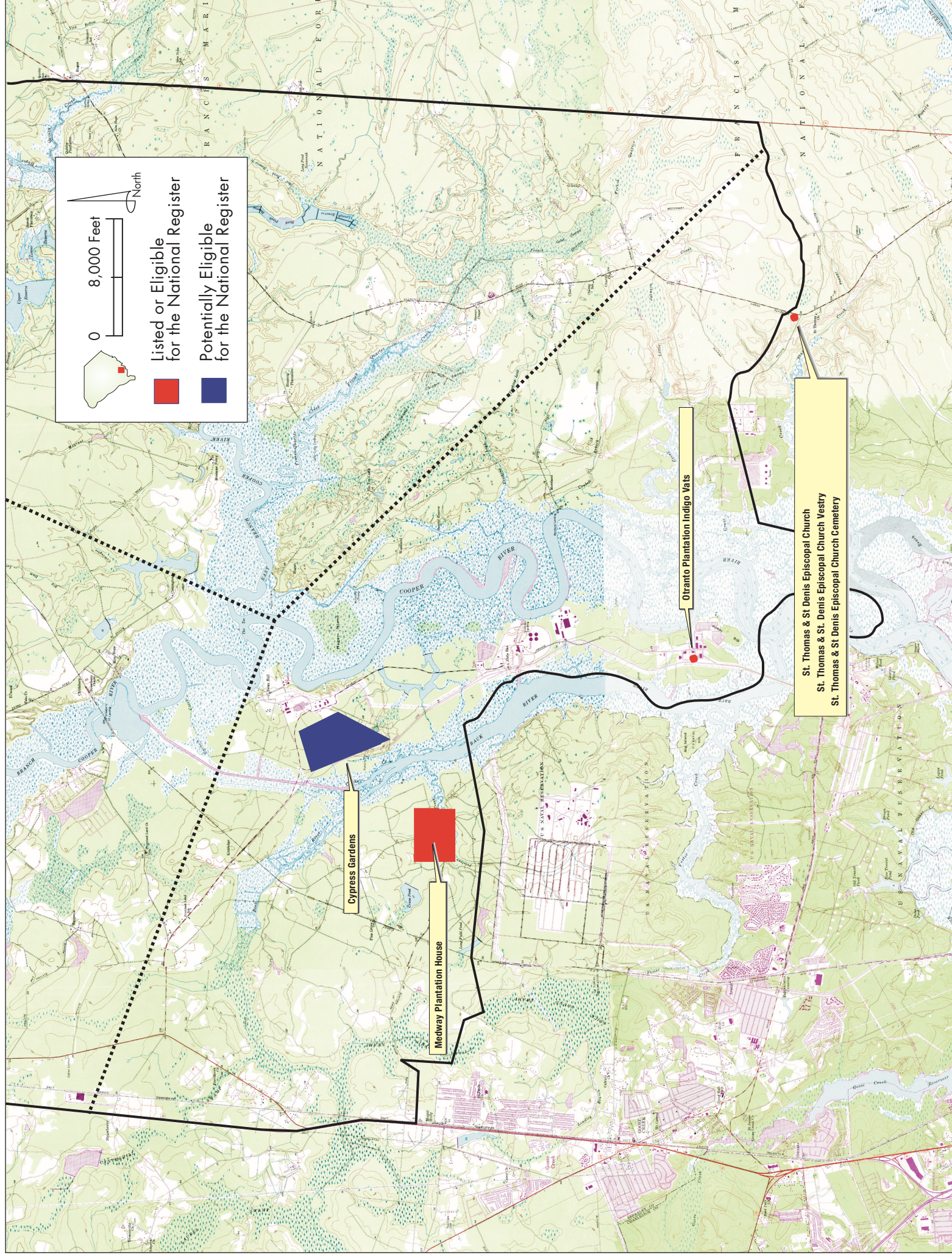


Figure 16
Location of Significant Standing Structures Examined by Preservation Consultants (1989), Lower West Branch of the Cooper River Valley



Source: Dept. of Natural Resources, Berkeley County; South Carolina, Quads; Mt. Holly 1957 (PR1979), Kittredge 1950 (PR1979), Huger 1950 (PR 1971), Ladson 1958 (PR 1979), North Charleston 1958 (PR 1979), Cainhoy 1958 (PR1971)