

OCTOBER 2020

Infant Mortality and Selected Birth Characteristics

2019 South Carolina Residence Data

**South Carolina Department of Health
and Environmental Control**

Vital Statistics

2600 Bull Street
Columbia, SC 29201

Phone: (803) 898-3649

Fax: (803) 898-3661



Executive Summary

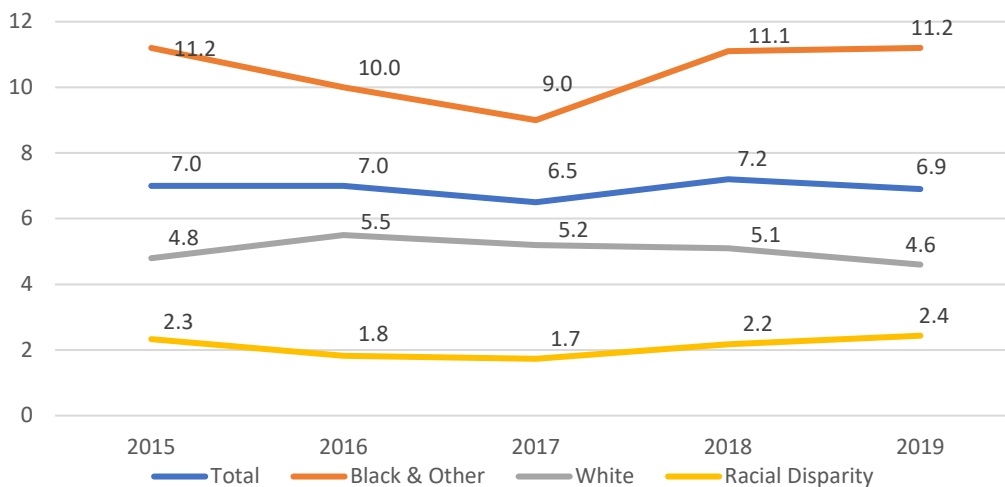
Infant mortality, defined as the death of a live-born baby before his or her first birthday, reflects the overall state of a population's health. The infant mortality rate is the number of babies who died during the first year of life for every 1,000 live births. The South Carolina (SC) Department of Health and Environmental Control (DHEC) collects and monitors infant mortality data to improve the health of mothers and babies in our state. In 2019, there were 391 infants who died during the first year of life.

While the most recent national data shows that the US infant mortality rate in 2018 (5.7 infant deaths per 1,000 live births)¹ surpassed the Healthy People (HP) 2020 Goal of no more than 6.0 infant deaths per 1,000 live births², the SC infant mortality rate is still higher than the HP target despite a decrease of 4.2% from 7.2 infant deaths per 1,000 live births in 2018 to 6.9 infant deaths per 1,000 live births in 2019.

The racial disparity for infant mortality remains a concern in SC, and the gap is now at its widest point in 5 years (see Figure 1 below). The infant mortality rate among births to minority women remained moderately constant from 2018 to 2019 (11.1 and 11.2, respectively) while the infant mortality rate among births to white mothers decreased 9.8% from 5.1 in 2018 to 4.6 infant deaths per 1,000 live births in 2019.

Trend in Infant Mortality, by Race: 2015-2019

Rate per 1,000 live births



Source: SC DHEC Vital Statistics

The 2019 infant mortality rate in the neonatal (less than 28 days after birth) period decreased 6.3% overall, which was mostly driven by an 14.7% decrease in the neonatal infant mortality rate among births to white women. Infant mortality rates in the postneonatal (28-365 days after birth) period remained unchanged from 2018 to 2019 among births to white and minority women.

The top leading causes of infant death overall in 2019 were disorders related to short gestation and low birthweight, birth defects, maternal complications of pregnancy, accidents, and sudden infant death syndrome. The number of infant deaths due to preterm or low birthweight increased 17.2% from 2018 to 2019. A 43.5% increase was seen in the number of deaths where the infant was affected by maternal complications of pregnancy. And the number of infant deaths due to sudden infant death syndrome (SIDS) increased by 35.7% (Table 8-C).

Sudden unexpected infant death, or SUID, is defined as the sudden and unexpected death of a baby less than 1 year old in which the cause was not obvious before an investigation is conducted. Most of these deaths occur while the baby is sleeping or in his or her sleep area. SUIDs include accidental suffocation or strangulation in an unsafe environment, sudden infant death syndrome (SIDS), and deaths from unspecified or unknown causes. Although the number of deaths from accidental suffocation and strangulation in bed decreased by 13.3% from 2018 (34 deaths) to 2019 (27 deaths), the number of SIDS deaths in SC increased from 14 deaths in 2018 to 19 deaths in 2019 (Table 10). The American Academy of Pediatrics updated their policy on safe sleeping in 2016, and DHEC has recently taken the lead on development of new, uniform safe sleep messaging to incorporate these recommendations in collaboration with the SC Birth Outcomes Initiative directive.

DHEC is committed to improving the health of women and infants before, during, and after pregnancy. The agency continues to partner with organizations such as the SC Hospital Association, SC Department of Health and Human Services, and SC Chapter of the March of Dimes to explore and implement innovative strategies that promote improved pregnancy and health outcomes for mothers, babies, and families in our state.

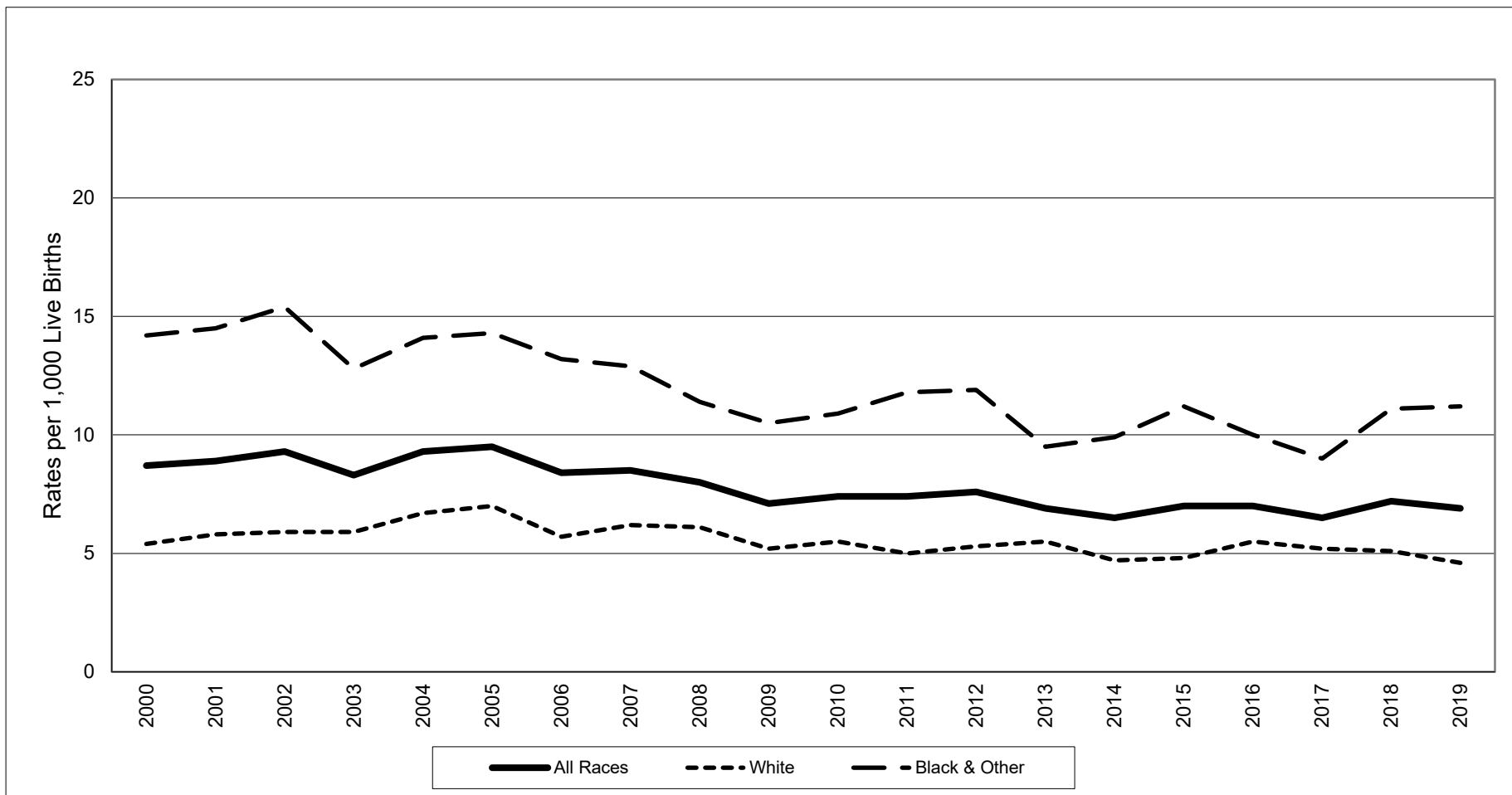
SC participates in the Collaborative Improvement and Innovation Network, or ColIN, led by the Association of Maternal and Child Health Programs, using the science of quality improvement and collaborative learning to reduce infant mortality as well as disparities in infant mortality by addressing social determinants of health, focusing on policy recommendations.

Several other practices and programs that address infant mortality in SC include hospital and physician emphasis on patient care quality and safety; evidence-based maternal and infant home visitation programs; postpartum newborn home visits; research and education; and the SC Birth Defects Program. DHEC staff and partners work diligently to give all babies their best chance to live a healthy and long life.

References:

1. Martin JA, Hamilton BE, Osterman MJK. Births in the United States, 2018. NCHS Data Brief, no 346. Hyattsville, MD: National Center for Health Statistics. 2019.
2. Healthy People 2020. Washington, DC: US Department of Health and Human Services, Office of Disease Prevention and Health Promotion. Retrieved from <https://www.healthypeople.gov/node/3492/objectives#4825>.
3. AAP TASK FORCE ON SUDDEN INFANT DEATH SYNDROME. SIDS and Other Sleep-Related Infant Deaths: Updated 2016 Recommendations for a Safe Infant Sleeping Environment. *Pediatrics*. 2016;138(5):e20162938

South Carolina Infant Mortality Rates¹ by Race² Residence Data, 2000-2019



	2000	2001	2002	2003	2004	2005	2006	2007	2008	2009	2010	2011	2012	2013	2014	2015	2016	2017	2018	2019
All Races	8.7	8.9	9.3	8.3	9.3	9.5	8.4	8.5	8.0	7.1	7.4	7.4	7.6	6.9	6.5	7.0	7.0	6.5	7.2	6.9
White	5.4	5.8	5.9	5.9	6.7	7.0	5.7	6.2	6.1	5.2	5.5	5.0	5.3	5.5	4.7	4.8	5.5	5.2	5.1	4.6
Black & Other	14.2	14.5	15.4	12.8	14.1	14.3	13.2	12.9	11.4	10.5	10.9	11.8	11.9	9.5	9.9	11.2	10.0	9.0	11.1	11.2

¹Rates per 1,000 live births

²Race of mother

Source: SC DHEC, Vital Statistics

Table 1.
 Infant Mortality Rates¹ with 95% Confidence Intervals²
 South Carolina, 2000-2019
 (Residence Data)

Year	Number of Live Births	Number of Infant Deaths	Infant Mortality Rate	95% Confidence Intervals
2000	55,964	488	8.7	(7.9, 9.5)
2001	55,748	496	8.9	(8.1, 9.7)
2002	54,453	507	9.3	(8.5, 10.1)
2003	55,461	463	8.3	(7.5, 9.1)
2004	56,543	524	9.3	(8.5, 10.1)
2005	57,538	549	9.5	(8.7, 10.3)
2006	62,191	520	8.4	(7.6, 9.1)
2007	62,933	538	8.5	(7.8, 9.3)
2008	63,077	504	8.0	(7.3, 8.7)
2009	60,682	430	7.1	(6.4, 7.8)
2010	58,325	430	7.4	(6.7, 8.1)
2011	57,338	423	7.4	(6.7, 8.1)
2012	57,100	435	7.6	(6.9, 8.3)
2013	56,743	389	6.9	(6.2, 7.6)
2014	57,631	372	6.5	(5.8, 7.2)
2015	58,135	405	7.0	(6.3, 7.7)
2016	57,337	401	7.0	(6.3, 7.7)
2017	57,030	371	6.5	(5.8, 7.2)
2018	56,668	406	7.2	(6.5, 7.9)
2019	57,044	391	6.9	(6.2, 7.6)

Table 2.
 Infant Mortality Rates¹ with 95% Confidence Intervals²
 South Carolina
 2000-2004, 2005-2009, 2010-2014, 2015-2019
 (Residence Data)

Years	Number of Live Births	Number of Infant Deaths	Infant Mortality Rate	95% Confidence Intervals
2000-2004	278,169	2,478	8.9	(8.6, 9.3)
2005-2009	306,421	2,541	8.3	(8.0, 8.6)
2010-2014	287,137	2,049	7.1	(6.8, 7.4)
2015-2019	286,214	1,974	6.9	(6.6, 7.2)

¹Rates per 1,000 live births

² $r \pm 61.981 (r/n)^{1/2}$, where r = infant mortality rate and n = number of live births

Table 3.
 Infant, Neonatal and Postneonatal Mortality and Mortality Rates¹ by Race²
 South Carolina
 2015, 2016, 2017, 2018 and 2019
 (Residence Data)

Infant Mortality									
	Total			White			Black & Other		
Year	Number of Live Births	Number of Infant Deaths	Rate	Number of Live Births	Number of Infant Deaths	Rate	Number of Live Births	Number of Infant Deaths	Rate
2015	58,135*	405*	7.0	38,459	185	4.8	19,611	219	11.2
2016	57,337*	401	7.0	38,264	210	5.5	19,025	191	10.0
2017	57,030*	371*	6.5	37,601	196	5.2	19,385	174	9.0
2018	56,668*	406	7.2	37,334	192	5.1	19,277	214	11.1
2019	57,044*	391	6.9	37,434	172	4.6	19,525	219	11.2

Neonatal Mortality (<28 days)									
	Total			White			Black & Other		
Year	Number of Live Births	Number of Infant Deaths	Rate	Number of Live Births	Number of Infant Deaths	Rate	Number of Live Births	Number of Infant Deaths	Rate
2015	58,135*	265*	4.6	38,459	121	3.1	19,611	143	7.3
2016	57,337*	253	4.4	38,264	117	3.1	19,025	136	7.1
2017	57,030*	239*	4.2	37,601	121	3.2	19,385	117	6.0
2018	56,668*	272	4.8	37,334	128	3.4	19,277	144	7.5
2019	57,044*	256	4.5	37,434	109	2.9	19,525	147	7.5

Postneonatal Mortality (28-364 days)									
	Total			White			Black & Other		
Year	Number of Live Births	Number of Infant Deaths	Rate	Number of Live Births	Number of Infant Deaths	Rate	Number of Live Births	Number of Infant Deaths	Rate
2015	58,135*	140	2.4	38,459	64	1.7	19,611	76	3.9
2016	57,337*	148	2.6	38,264	93	2.4	19,025	55	2.9
2017	57,030*	132	2.3	37,601	75	2.0	19,385	57	2.9
2018	56,668*	134	2.4	37,334	64	1.7	19,277	70	3.6
2019	57,044*	135	2.4	37,434	63	1.7	19,525	72	3.7

¹Rates per 1,000 live births

²Race of mother

*Includes unknown race

Table 4.
Infant Mortality and Infant Mortality Rates¹
South Carolina and Each County, 2019, 2017-2019, 2014-2016
(Residence Data)

County of Residence	2019		2017-2019		2014-2016	
	Number	Rate	Number	Rate	Number	Rate
South Carolina	391	6.9	1,168	6.8	1,178	6.8
Abbeville	-	-	5	6.9	6	8.5
Aiken	14	7.8	49	8.8	33	5.6
Allendale	-	-	-	-	4	15.7
Anderson	12	5.5	41	6.1	52	7.6
Bamberg	1	6.5	6	14.5	4	10.1
Barnwell	2	7.4	9	12.0	5	6.6
Beaufort	8	4.3	23	4.0	25	4.1
Berkeley	15	5.2	43	5.1	44	5.4
Calhoun	1	8.2	5	12.4	7	17.6
Charleston	38	7.7	87	6.0	75	5.0
Cherokee	7	11.2	16	8.1	8	3.9
Chester	6	15.2	12	10.7	13	11.6
Chesterfield	3	6.4	14	9.4	14	9.2
Clarendon	4	12.8	9	9.5	10	10.0
Colleton	9	19.5	15	10.9	11	8.0
Darlington	9	11.6	18	7.9	20	8.3
Dillon	3	7.0	13	10.3	14	11.7
Dorchester	15	8.1	34	6.1	34	6.2
Edgefield	1	5.3	4	7.0	7	11.6
Fairfield	-	-	5	8.1	7	11.4
Florence	26	16.0	63	12.8	62	12.1
Georgetown	2	3.9	12	7.6	4	2.4
Greenville	31	5.0	119	6.3	106	5.6
Greenwood	6	7.1	21	8.5	19	7.7
Hampton	3	15.8	4	6.7	7	10.9
Horry	21	6.7	58	6.1	69	7.4
Jasper	2	5.7	10	9.2	7	6.5
Kershaw	3	4.0	10	4.5	17	7.4
Lancaster	9	9.1	21	7.0	27	8.7
Laurens	2	2.7	13	5.5	22	9.7
Lee	1	5.5	7	13.2	2	3.8
Lexington	22	6.9	64	6.6	64	6.6
McCormick	1	19.6	2	12.3	2	10.3
Marion	4	12.9	12	11.8	16	13.9
Marlboro	2	7.0	7	8.3	16	17.4
Newberry	4	9.4	11	8.9	10	7.3
Oconee	8	11.7	20	9.5	12	5.1
Orangeburg	11	11.6	27	9.3	32	10.9
Pickens	6	4.7	18	5.0	19	5.0
Richland	25	5.2	103	7.3	122	8.4
Saluda	6	28.8	8	12.0	3	3.9
Spartanburg	22	5.5	63	5.4	61	5.6
Sumter	9	6.4	25	6.0	32	7.3
Union	2	7.3	4	4.6	5	5.2
Williamsburg	4	13.4	12	13.1	3	3.0
York	11	3.7	46	5.2	46	5.2

¹Rates per 1,000 live births. Rates calculated with 20 or fewer deaths are unreliable and should be used cautiously.

Table 4-A.
White¹ Infant Mortality and Infant Mortality Rates²
South Carolina and Each County, 2019, 2017-2019, 2014-2016
(Residence Data)

County of Residence	2019		2017-2019		2014-2016	
	Number	Rate	Number	Rate	Number	Rate
South Carolina	172	4.6	560	5.0	572	5.0
Abbeville	-	-	1	1.9	1	2.0
Aiken	4	3.3	27	7.2	15	3.9
Allendale	-	-	-	-	-	-
Anderson	9	5.3	31	5.8	30	5.5
Bamberg	-	-	-	-	-	-
Barnwell	1	7.2	4	10.6	4	10.7
Beaufort	3	2.2	11	2.6	13	2.9
Berkeley	6	2.9	23	3.8	22	3.7
Calhoun	-	-	2	9.4	2	9.3
Charleston	14	4.1	29	2.9	29	2.9
Cherokee	3	6.6	9	6.2	5	3.3
Chester	2	10.1	5	8.3	6	10.0
Chesterfield	-	-	6	6.7	10	10.9
Clarendon	1	7.4	3	7.0	5	11.3
Colleton	2	7.2	6	7.6	4	5.2
Darlington	4	11.5	8	7.2	8	6.6
Dillon	2	11.2	4	7.4	5	10.4
Dorchester	7	5.7	18	4.8	21	5.5
Edgefield	-	-	-	-	3	9.3
Fairfield	-	-	1	4.6	1	4.3
Florence	11	14.7	23	10.3	20	8.1
Georgetown	2	6.7	9	9.9	3	3.0
Greenville	15	3.2	63	4.4	64	4.4
Greenwood	2	4.0	8	5.4	7	4.5
Hampton	1	11.0	2	8.3	1	3.9
Horry	11	4.5	33	4.5	53	7.2
Jasper	1	4.6	6	9.2	3	5.0
Kershaw	3	5.4	7	4.4	10	6.1
Lancaster	6	8.4	12	5.6	17	7.6
Laurens	-	-	5	3.0	12	7.4
Lee	-	-	3	21.0	-	-
Lexington	14	5.7	43	5.8	46	5.9
McCormick	-	-	-	-	-	-
Marion	1	10.3	3	8.8	2	5.4
Marlboro	-	-	1	3.0	8	20.0
Newberry	1	4.0	3	3.9	5	6.1
Oconee	8	13.1	19	10.0	11	5.2
Orangeburg	-	-	3	3.3	4	4.4
Pickens	6	5.2	18	5.6	17	5.0
Richland	5	2.5	24	4.2	30	4.8
Saluda	5	30.7	7	13.5	2	3.5
Spartanburg	11	3.7	40	4.6	37	4.6
Sumter	5	7.6	11	5.6	5	2.5
Union	2	11.6	4	7.3	3	4.8
Williamsburg	-	-	1	3.6	-	-
York	4	2.0	24	3.9	28	4.4

¹Race of mother

²Rates per 1,000 live births. Rates calculated with 20 or fewer deaths are unreliable and should be used cautiously.

Table 4-B.
Black and Other¹ Infant Mortality and Infant Mortality Rates²
South Carolina and Each County, 2019, 2017-2019, 2014-2016
(Residence Data)

County of Residence	2019		2017-2019		2014-2016	
	Number	Rate	Number	Rate	Number	Rate
South Carolina	219	11.2	607	10.4	605	10.4
Abbeville	-	-	4	19.5	5	24.0
Aiken	10	17.2	21	11.6	18	9.2
Allendale	-	-	-	-	4	18.9
Anderson	3	6.3	10	7.1	22	15.5
Bamberg	1	10.6	6	24.0	4	15.3
Barnwell	1	7.5	5	13.5	1	2.6
Beaufort	5	10.2	12	7.9	12	7.6
Berkeley	9	11.2	20	8.6	22	10.0
Calhoun	1	17.2	3	15.8	5	27.3
Charleston	24	15.7	58	12.7	46	9.3
Cherokee	4	23.5	7	13.4	3	5.6
Chester	4	20.4	7	13.6	7	13.5
Chesterfield	3	15.8	8	13.6	4	6.6
Clarendon	3	16.9	6	11.5	5	9.0
Colleton	7	37.8	9	15.2	7	11.7
Darlington	5	11.8	10	8.5	12	10.0
Dillon	1	4.0	9	12.4	9	12.5
Dorchester	8	12.8	16	9.0	13	7.7
Edgefield	1	12.2	4	16.1	4	14.3
Fairfield	-	-	4	10.1	6	15.7
Florence	15	17.1	40	14.8	42	15.9
Georgetown	-	-	3	4.5	1	1.5
Greenville	16	10.5	56	12.2	42	9.3
Greenwood	4	11.8	13	13.1	12	12.8
Hampton	2	20.2	2	5.6	6	15.9
Horry	10	14.6	25	11.9	16	8.2
Jasper	1	7.5	4	9.3	4	8.3
Kershaw	-	-	3	4.9	7	11.0
Lancaster	3	11.1	9	10.8	10	11.3
Laurens	2	9.2	8	11.7	10	15.4
Lee	1	7.8	4	10.4	2	5.1
Lexington	8	10.9	21	9.7	17	8.9
McCormick	1	43.5	2	21.3	2	16.4
Marion	3	14.2	9	13.3	14	17.9
Marlboro	2	11.0	6	11.7	8	15.4
Newberry	3	17.2	8	17.1	5	9.1
Oconee	-	-	1	4.9	1	4.1
Orangeburg	11	16.7	24	12.1	28	13.9
Pickens	-	-	-	-	2	5.9
Richland	20	7.0	79	9.4	92	11.0
Saluda	1	22.2	1	6.7	1	5.1
Spartanburg	11	10.5	23	7.6	24	8.6
Sumter	4	5.3	14	6.4	27	11.4
Union	-	-	-	-	2	5.9
Williamsburg	4	19.4	11	17.2	3	4.2
York	7	7.2	22	8.0	18	7.4

¹Race of mother

²Rates per 1,000 live births. Rates calculated with 20 or fewer deaths are unreliable and should be used cautiously.

Table 5.

Infant, Neonatal and Postneonatal Mortality Rates¹ by Race²
 and Percent Change from 2018 to 2019
 South Carolina
 (Residence Data)

Infant Mortality			
Year	Total	White	Black & Other
2018	7.2	5.1	11.1
2019	6.9	4.6	11.2
Percent Change	-4.2%	-9.8%	0.9%

Neonatal Mortality			
Year	Total	White	Black & Other
2018	4.8	3.4	7.5
2019	4.5	3.0	7.6
Percent Change	-6.3%	-11.8%	1.3%

Postneonatal Mortality			
Year	Total	White	Black & Other
2018	2.4	1.7	3.6
2019	2.3	1.7	3.7
Percent Change	-4.2%	0.0%	2.8%

¹Rates per 1,000 live births

²Race of mother

Table 6.
Neonatal Mortality and Neonatal Mortality Rates¹
South Carolina and Each County, 2019, 2017-2019, 2014-2016
(Residence Data)

County of Residence	2019		2017-2019		2014-2016	
	Number	Rate	Number	Rate	Number	Rate
South Carolina	256	4.5	767	4.5	764	4.4
Abbeville	-	-	4	5.5	2	2.8
Aiken	8	4.4	30	5.4	22	3.8
Allendale	-	-	-	-	4	15.7
Anderson	9	4.1	29	4.3	35	5.1
Bamberg	1	6.5	6	14.5	4	10.1
Barnwell	-	-	4	5.4	-	-
Beaufort	3	1.6	14	2.4	19	3.1
Berkeley	11	3.8	27	3.2	28	3.4
Calhoun	1	8.2	4	10.0	6	15.1
Charleston	25	5.0	55	3.8	45	3.0
Cherokee	6	9.6	14	7.1	5	2.5
Chester	5	12.6	7	6.2	8	7.2
Chesterfield	2	4.3	8	5.4	10	6.6
Clarendon	2	6.4	4	4.2	4	4.0
Colleton	6	13.0	11	8.0	4	2.9
Darlington	6	7.8	12	5.2	8	3.3
Dillon	2	4.7	9	7.1	9	7.5
Dorchester	12	6.5	22	4.0	20	3.6
Edgefield	-	-	2	3.5	4	6.7
Fairfield	-	-	3	4.9	5	8.1
Florence	20	12.3	45	9.1	40	7.8
Georgetown	-	-	7	4.4	3	1.8
Greenville	18	2.9	83	4.4	62	3.3
Greenwood	5	6.0	14	5.6	13	5.2
Hampton	1	5.3	2	3.4	3	4.7
Horry	13	4.1	41	4.3	44	4.7
Jasper	2	5.7	6	5.5	7	6.5
Kershaw	3	4.0	8	3.6	12	5.3
Lancaster	6	6.1	13	4.3	21	6.8
Laurens	-	-	8	3.4	16	7.0
Lee	1	5.5	5	9.4	2	3.8
Lexington	10	3.1	33	3.4	42	4.3
McCormick	1	19.6	2	12.3	2	10.3
Marion	3	9.7	10	9.9	9	7.8
Marlboro	1	3.5	4	4.7	10	10.9
Newberry	4	9.4	6	4.9	8	5.8
Oconee	5	7.3	8	3.8	9	3.8
Orangeburg	9	9.5	22	7.5	28	9.6
Pickens	6	4.7	12	3.3	14	3.7
Richland	16	3.3	72	5.1	78	5.3
Saluda	2	9.6	4	6.0	2	2.6
Spartanburg	15	3.8	37	3.2	35	3.2
Sumter	6	4.2	18	4.3	21	4.8
Union	1	3.6	3	3.4	4	4.1
Williamsburg	2	6.7	9	9.8	1	1.0
York	7	2.3	30	3.4	36	4.1

¹Rates per 1,000 live births. Rates calculated with 20 or fewer deaths are unreliable and should be used cautiously.

Table 6-A.
White¹ Neonatal Mortality and Neonatal Mortality Rates²
South Carolina and Each County, 2019, 2017-2019, 2014-2016
(Residence Data)

County of Residence	2019		2017-2019		2014-2016	
	Number	Rate	Number	Rate	Number	Rate
South Carolina	109	2.9	358	3.2	351	3.1
Abbeville	-	-	1	1.9	-	-
Aiken	1	0.8	15	4.0	10	2.6
Allendale	-	-	-	-	-	-
Anderson	6	3.5	21	3.9	19	3.5
Bamberg	-	-	-	-	-	-
Barnwell	-	-	1	2.7	-	-
Beaufort	2	1.5	7	1.6	10	2.2
Berkeley	4	1.9	12	2.0	14	2.4
Calhoun	-	-	1	4.7	2	9.3
Charleston	10	2.9	21	2.1	16	1.6
Cherokee	2	4.4	7	4.8	3	2.0
Chester	1	5.0	2	3.3	2	3.3
Chesterfield	-	-	2	2.2	9	9.8
Clarendon	1	7.4	1	2.3	2	4.5
Colleton	-	-	4	5.1	-	-
Darlington	3	8.6	6	5.4	4	3.3
Dillon	2	11.2	4	7.4	4	8.3
Dorchester	6	4.9	12	3.2	9	2.4
Edgefield	-	-	-	-	1	3.1
Fairfield	-	-	-	-	-	-
Florence	8	10.7	18	8.1	9	3.6
Georgetown	-	-	5	5.5	2	2.0
Greenville	9	1.9	47	3.3	34	2.3
Greenwood	2	4.0	5	3.4	6	3.9
Hampton	-	-	1	4.2	1	3.9
Horry	6	2.4	23	3.1	33	4.5
Jasper	1	4.6	3	4.6	3	5.0
Kershaw	3	5.4	5	3.1	8	4.9
Lancaster	5	7.0	10	4.6	13	5.8
Laurens	-	-	4	2.4	9	5.5
Lee	-	-	1	7.0	-	-
Lexington	6	2.4	20	2.7	28	3.6
McCormick	-	-	-	-	-	-
Marion	1	10.3	3	8.8	1	2.7
Marlboro	-	-	1	3.0	4	10.0
Newberry	1	4.0	1	1.3	4	4.9
Oconee	5	8.2	8	4.2	9	4.3
Orangeburg	-	-	2	2.2	3	3.3
Pickens	6	5.2	12	3.7	12	3.5
Richland	2	1.0	16	2.8	20	3.2
Saluda	1	6.1	3	5.8	1	1.8
Spartanburg	9	3.1	26	3.0	17	2.1
Sumter	3	4.6	9	4.6	3	1.5
Union	1	5.8	3	5.5	3	4.8
Williamsburg	-	-	1	3.6	-	-
York	2	1.0	14	2.3	23	3.6

¹Race of mother

²Rates per 1,000 live births. Rates calculated with 20 or fewer deaths are unreliable and should be used cautiously.

Table 6-B.

Black and Other¹ Neonatal Mortality and Neonatal Mortality Rates²
 South Carolina and Each County, 2019, 2017-2019, 2014-2016
 (Residence Data)

County of Residence	2019		2017-2019		2014-2016	
	Number	Rate	Number	Rate	Number	Rate
South Carolina	147	7.5	408	7.0	412	7.1
Abbeville	-	-	3	14.6	2	9.6
Aiken	7	12.0	14	7.8	12	6.1
Allendale	-	-	-	-	4	18.9
Anderson	3	6.3	8	5.7	16	11.2
Bamberg	1	10.6	6	24.0	4	15.3
Barnwell	-	-	3	8.1	-	-
Beaufort	1	2.0	7	4.6	9	5.7
Berkeley	7	8.7	15	6.4	14	6.4
Calhoun	1	17.2	3	15.8	4	21.9
Charleston	15	9.8	34	7.4	29	5.9
Cherokee	4	23.5	7	13.4	2	3.7
Chester	4	20.4	5	9.7	6	11.6
Chesterfield	2	10.5	6	10.2	1	1.7
Clarendon	1	5.6	3	5.7	2	3.6
Colleton	6	32.4	7	11.8	4	6.7
Darlington	3	7.1	6	5.1	4	3.3
Dillon	-	-	5	6.9	5	6.9
Dorchester	6	9.6	10	5.6	11	6.5
Edgefield	-	-	2	8.0	3	10.8
Fairfield	-	-	3	7.5	5	13.1
Florence	12	13.7	27	10.0	31	11.7
Georgetown	-	-	2	3.0	1	1.5
Greenville	9	5.9	36	7.9	28	6.2
Greenwood	3	8.9	9	9.1	7	7.4
Hampton	1	10.1	1	2.8	2	5.3
Horry	7	10.2	18	8.6	11	5.7
Jasper	1	7.5	3	7.0	4	8.3
Kershaw	-	-	3	4.9	4	6.3
Lancaster	1	3.7	3	3.6	8	9.1
Laurens	-	-	4	5.8	7	10.8
Lee	1	7.8	4	10.4	2	5.1
Lexington	4	5.4	13	6.0	13	6.8
McCormick	1	43.5	2	21.3	2	16.4
Marion	2	9.4	7	10.4	8	10.2
Marlboro	1	5.5	3	5.9	6	11.5
Newberry	3	17.2	5	10.7	4	7.3
Oconee	-	-	-	-	-	-
Orangeburg	9	13.6	20	10.1	25	12.4
Pickens	-	-	-	-	2	5.9
Richland	14	4.9	56	6.7	58	6.9
Saluda	1	22.2	1	6.7	1	5.1
Spartanburg	6	5.7	11	3.6	18	6.5
Sumter	3	4.0	9	4.1	18	7.6
Union	-	-	-	-	1	2.9
Williamsburg	2	9.7	8	12.5	1	1.4
York	5	5.1	16	5.8	13	5.3

¹Race of mother

²Rates per 1,000 live births. Rates calculated with 20 or fewer deaths are unreliable and should be used cautiously.

Table 7.
Postneonatal Mortality and Postneonatal Mortality Rates¹
South Carolina and Each County, 2019, 2017-2019, 2014-2016
(Residence Data)

County of Residence	2019		2017-2019		2014-2016	
	Number	Rate	Number	Rate	Number	Rate
South Carolina	135	2.4	401	2.3	414	2.4
Abbeville	-	-	1	1.4	4	5.7
Aiken	6	3.3	19	3.4	11	1.9
Allendale	-	-	-	-	-	-
Anderson	3	1.4	12	1.8	17	2.5
Bamberg	-	-	-	-	-	-
Barnwell	2	7.4	5	6.7	5	6.6
Beaufort	5	2.7	9	1.6	6	1.0
Berkeley	4	1.4	16	1.9	16	2.0
Calhoun	-	-	1	2.5	1	2.5
Charleston	13	2.6	32	2.2	30	2.0
Cherokee	1	1.6	2	1.0	3	1.5
Chester	1	2.5	5	4.5	5	4.5
Chesterfield	1	2.1	6	4.0	4	2.6
Clarendon	2	6.4	5	5.3	6	6.0
Colleton	3	6.5	4	2.9	7	5.1
Darlington	3	3.9	6	2.6	12	5.0
Dillon	1	2.3	4	3.2	5	4.2
Dorchester	3	1.6	12	2.2	14	2.5
Edgefield	1	5.3	2	3.5	3	5.0
Fairfield	-	-	2	3.3	2	3.3
Florence	6	3.7	18	3.6	22	4.3
Georgetown	2	3.9	5	3.2	1	0.6
Greenville	13	2.1	36	1.9	44	2.3
Greenwood	1	1.2	7	2.8	6	2.4
Hampton	2	10.5	2	3.4	4	6.3
Horry	8	2.5	17	1.8	25	2.7
Jasper	-	-	4	3.7	-	-
Kershaw	-	-	2	0.9	5	2.2
Lancaster	3	3.0	8	2.7	6	1.9
Laurens	2	2.7	5	2.1	6	2.6
Lee	-	-	2	3.8	-	-
Lexington	12	3.8	31	3.2	22	2.3
McCormick	-	-	-	-	-	-
Marion	1	3.2	2	2.0	7	6.1
Marlboro	1	3.5	3	3.5	6	6.5
Newberry	-	-	5	4.1	2	1.5
Oconee	3	4.4	12	5.7	3	1.3
Orangeburg	2	2.1	5	1.7	4	1.4
Pickens	-	-	6	1.7	5	1.3
Richland	9	1.9	31	2.2	44	3.0
Saluda	4	19.2	4	6.0	1	1.3
Spartanburg	7	1.8	26	2.2	26	2.4
Sumter	3	2.1	7	1.7	11	2.5
Union	1	3.6	1	1.1	1	1.0
Williamsburg	2	6.7	3	3.3	2	2.0
York	4	1.3	16	1.8	10	1.1

¹Rates per 1,000 live births. Rates calculated with 20 or fewer deaths are unreliable and should be used cautiously.

Table 7-A.

White¹ Postneonatal Mortality and Postneonatal Mortality Rates²
 South Carolina and Each County, 2019, 2017-2019, 2014-2016
 (Residence Data)

County of Residence	2019		2017-2019		2014-2016	
	Number	Rate	Number	Rate	Number	Rate
South Carolina	63	1.7	202	1.8	221	1.9
Abbeville	-	-	-	-	1	2.0
Aiken	3	2.5	12	3.2	5	1.3
Allendale	-	-	-	-	-	-
Anderson	3	1.8	10	1.9	11	2.0
Bamberg	-	-	-	-	-	-
Barnwell	1	7.2	3	8.0	4	10.7
Beaufort	1	0.7	4	0.9	3	0.7
Berkeley	2	1.0	11	1.8	8	1.4
Calhoun	-	-	1	4.7	-	-
Charleston	4	1.2	8	0.8	13	1.3
Cherokee	1	2.2	2	1.4	2	1.3
Chester	1	5.0	3	5.0	4	6.7
Chesterfield	-	-	4	4.5	1	1.1
Clarendon	-	-	2	4.7	3	6.8
Colleton	2	7.2	2	2.5	4	5.2
Darlington	1	2.9	2	1.8	4	3.3
Dillon	-	-	-	-	1	2.1
Dorchester	1	0.8	6	1.6	12	3.1
Edgefield	-	-	-	-	2	6.2
Fairfield	-	-	1	4.6	1	4.3
Florence	3	4.0	5	2.2	11	4.5
Georgetown	2	6.7	4	4.4	1	1.0
Greenville	6	1.3	16	1.1	30	2.1
Greenwood	-	-	3	2.0	1	0.6
Hampton	1	11.0	1	4.2	-	-
Horry	5	2.0	10	1.4	20	2.7
Jasper	-	-	3	4.6	-	-
Kershaw	-	-	2	1.3	2	1.2
Lancaster	1	1.4	2	0.9	4	1.8
Laurens	-	-	1	0.6	3	1.8
Lee	-	-	2	14.0	-	-
Lexington	8	3.2	23	3.1	18	2.3
McCormick	-	-	-	-	-	-
Marion	-	-	-	-	1	2.7
Marlboro	-	-	-	-	4	10.0
Newberry	-	-	2	2.6	1	1.2
Oconee	3	4.9	11	5.8	2	1.0
Orangeburg	-	-	1	1.1	1	1.1
Pickens	-	-	6	1.9	5	1.5
Richland	3	1.5	8	1.4	10	1.6
Saluda	4	24.5	4	7.7	1	1.8
Spartanburg	2	0.7	14	1.6	20	2.5
Sumter	2	3.0	2	1.0	2	1.0
Union	1	5.8	1	1.8	-	-
Williamsburg	-	-	-	-	-	-
York	2	1.0	10	1.6	5	0.8

¹Race of mother²Rates per 1,000 live births. Rates calculated with 20 or fewer deaths are unreliable and should be used cautiously.

Table 7-B.

Black and Other¹ Postneonatal Mortality and Postneonatal Mortality Rates²
 South Carolina and Each County, 2019, 2017-2019, 2014-2016
 (Residence Data)

County of Residence	2019		2017-2019		2014-2017	
	Number	Rate	Number	Rate	Number	Rate
South Carolina	72	3.7	199	3.4	193	3.3
Abbeville	-	-	1	4.9	3	14.4
Aiken	3	5.2	7	3.9	6	3.1
Allendale	-	-	-	-	-	-
Anderson	-	-	2	1.4	6	4.2
Bamberg	-	-	-	-	-	-
Barnwell	1	7.5	2	5.4	1	2.6
Beaufort	4	8.1	5	3.3	3	1.9
Berkeley	2	2.5	5	2.1	8	3.6
Calhoun	-	-	-	-	1	5.5
Charleston	9	5.9	24	5.2	17	3.5
Cherokee	-	-	-	-	1	1.9
Chester	-	-	2	3.9	1	1.9
Chesterfield	1	5.3	2	3.4	3	5.0
Clarendon	2	11.2	3	5.7	3	5.4
Colleton	1	5.4	2	3.4	3	5.0
Darlington	2	4.7	4	3.4	8	6.7
Dillon	1	4.0	4	5.5	4	5.5
Dorchester	2	3.2	6	3.4	2	1.2
Edgefield	1	12.2	2	8.0	1	3.6
Fairfield	-	-	1	2.5	1	2.6
Florence	3	3.4	13	4.8	11	4.2
Georgetown	-	-	1	1.5	-	-
Greenville	7	4.6	20	4.4	14	3.1
Greenwood	1	3.0	4	4.0	5	5.3
Hampton	1	10.1	1	2.8	4	10.6
Horry	3	4.4	7	3.3	5	2.6
Jasper	-	-	1	2.3	-	-
Kershaw	-	-	-	-	3	4.7
Lancaster	2	7.4	6	7.2	2	2.3
Laurens	2	9.2	4	5.8	3	4.6
Lee	-	-	-	-	-	-
Lexington	4	5.4	8	3.7	4	2.1
McCormick	-	-	-	-	-	-
Marion	1	4.7	2	3.0	6	7.7
Marlboro	1	5.5	3	5.9	2	3.8
Newberry	-	-	3	6.4	1	1.8
Oconee	-	-	1	4.9	1	4.1
Orangeburg	2	3.0	4	2.0	3	1.5
Pickens	-	-	-	-	-	-
Richland	6	2.1	23	2.7	34	4.1
Saluda	-	-	-	-	-	-
Spartanburg	5	4.8	12	4.0	6	2.2
Sumter	1	1.3	5	2.3	9	3.8
Union	-	-	-	-	1	2.9
Williamsburg	2	9.7	3	4.7	2	2.8
York	2	2.0	6	2.2	5	2.1

¹Race of mother

²Rates per 1,000 live births. Rates calculated with 20 or fewer deaths are unreliable and should be used cautiously.

Table 8.
Leading Causes of Infant Death by Age at Death
South Carolina, 2019
(Residence Data)

Cause of Infant Death (ICD-10 Codes)	Total	Under 1 Day	1-6 Days	7-27 Days	Neonatal (<28 days)	Post-Neonatal (28-364 days)
Total Infant Deaths	391	149	48	59	256	135
Disorders related to short gestation and low birthweight, NEC (P07)	68	61	4	1	66	2
Congenital malformations, deformations, etc. (Q00-Q99)	63	20	11	12	43	20
Fetus and newborn affected by maternal complications of pregnancy (P01)	33	32	1	-	33	-
Accidents (V01-X59, Y85-Y86)	32	1	1	4	6	26
Sudden infant death syndrome (R95)	19	1	-	2	3	16
Bacterial sepsis of newborn (P36)	16	2	6	8	16	-
Newborn affected by complication of placenta, etc. (P02)	10	8	1	1	10	-
Intrauterine hypoxia and birth asphyxia (P20-P21)	8	2	4	2	8	-
Influenza and Pneumonia (J10-J18)	7	-	-	-	-	7
Respiratory Distress of Newborn (P22)	6	3	2	1	6	-
All other causes	129	19	18	28	65	64

Table 8-A.
Leading Causes of White¹ Infant Death by Age at Death
South Carolina, 2019
(Residence Data)

Cause of Infant Death (ICD-10 Codes)	Total	Under 1 Day	1-6 Days	7-27 Days	Neonatal (<28 days)	Post-Neonatal (28-364 days)
Total White Infant Deaths	161	55	22	27	104	57
Congenital malformations, deformations, etc. (Q00-Q99)	36	15	6	5	26	10
Disorders related to short gestation and low birthweight, NEC (P07)	25	22	1	1	24	1
Accidents (V01-X59, Y85-Y86)	16	1	-	3	4	12
Bacterial sepsis of newborn (P36)	6	1	1	4	6	-
Sudden infant death syndrome (R95)	6	1	-	1	2	4
Fetus and newborn affected by maternal complications of pregnancy (P01)	6	5	1	-	6	-
Influenza and Pneumonia (J1-J18)	4	-	-	-	-	4
Intrauterine Hypoxia and Birth Asphyxia (P20-P21)	4	-	3	1	4	-
Respiratory Distress of Newborn (P22)	4	2	1	1	4	-
DZ of Circulatory System (I00-I99)	3	1	-	-	1	2
Assault (homicide) (X85-Y09,Y87.1)	3	-	-	-	-	3
All other causes	48	7	9	11	27	21

¹ Race of child

Table 8-B.
Leading Causes of Black and Other¹ Infant Death by Age at Death
South Carolina, 2019
(Residence Data)

Cause of Infant Death (ICD-10 Codes)	Total	Under 1 Day	1-6 Days	7-27 Days	Neonatal (<28 days)	Post-Neonatal (28-364 days)
Total Black and Other Infant Deaths	230	94	26	32	152	78
Disorders related to short gestation and low birthweight, NEC (P07)	43	39	3	-	42	1
Fetus and newborn affected by maternal complications of pregnancy (P01)	27	27	-	-	27	-
Congenital malformations, deformations, etc. (Q00-Q99)	27	5	5	7	17	10
Accidents (V01-X59, Y85-Y86)	16	-	1	1	2	14
Sudden infant death syndrome (R95)	13	-	-	1	1	12
Bacterial sepsis of newborn (P36)	10	1	5	4	10	-
Newborn affected by complication of placenta, etc. (P02)	8	6	1	1	8	-
Newborn affected by Maternal Hypertensive disorder (P00.0)	4	2	-	1	3	1
Intrauterine hypoxia and birth asphyxia (P20-P21)	4	2	1	1	4	-
Neonatal Hemorrhage (P50-P52, P54)	4	-	2	2	4	-
Necrotizing Enterocolitis of newborn (P77)	4	-	-	4	4	-
All other causes	70	12	8	10	30	40

¹ Race of child

Table 8-C.
 Percent Change of Leading Causes of Infant Death
 from 2018 to 2019, South Carolina

Cause of Infant Death Ranked by 2019 Data (ICD-10 Codes)	2018	2019	% Change
Total Infant Deaths	406	391	-3.7%
Disorders related to short gestation and low birthweight, NEC. (P07)	58	68	17.2%
Congenital malformations, deformations, etc. (Q00-Q99)	82	63	-23.2%
Fetus and newborn affected by maternal complications of pregnancy (P01)	23	33	43.5%
Accidents (V01-X59, Y85-Y86)	38	32	-15.8%
Sudden infant death syndrome (R95)	14	19	35.7%
Bacterial sepsis of newborn (P36)	14	16	14.3%
Newborn affected by complication of placenta, etc. (P02)	9	10	11.1%
Intrauterine hypoxia and birth asphyxia (P20-P21)	10	8	-20.0%
Influenza and Pheumonia (J10-J18)	-	7	-
Respiratory distress of newborn (P22)	10	6	-40.0%
All other causes	139	129	-7.2%

Table 9.
Breakdown of Infant Deaths due to Accidents
South Carolina, 2013-2019
(Residence Data)

	2013	2014	2015	2016	2017	2018	2019	Total (2013-2019)
Accidental suffocation and strangulation in bed (W75, W84)	21	31	35	33	30	34	27	211
Other accidental threats to breathing	2	3	1	3	1	2	0	12
Transportation	0	3	0	2	1	1	3	10
Drowning	0	1	0	0	0	0	2	3
Poison	0	1	0	0	0	0	0	1
Other accidents	0	1	2	1	2	1	0	7
Total	23	40	38	39	34	38	32	244

Table 10.
Breakdown of Sudden Unexplained Infant Deaths
South Carolina, 2013-2019
(Residence Data)

	2013	2014	2015	2016	2017	2018	2019	Total (2013-2019)
Accidental suffocation and strangulation in bed (W75, W84)	21	31	35	33	30	34	27	211
Sudden Infant Death Syndrome (R95)	35	31	28	27	28	14	19	182
Hanging, strangulation, and suffocation, undetermined intent (Y20)	9	4	4	1	2	2	1	23
Other ill-defined and unspecified causes of mortality (R99)	6	11	11	10	10	21	25	94
Total	71	77	78	71	70	71	72	510

Table 11.
Leading Causes of Infant Death and Mortality Rates¹
South Carolina, 2017-2019
(Residence Data)

Table 11. South Carolina Infant Death, Resident Data, 2017-2019, All races

Rank	Cause of death	Number	Rate
Total Infant Deaths.....	1,168	6.8
1	Congenital malformations, deformations, etc. (Q00-Q99).....	209	1.2
2	Disorders related to short gestation and low birthweight (P07).....	178	1.0
3	Accidents (V01-X59,Y85-Y86).....	104	0.6
4	Fetus and newborn affected by maternal complications of pregnancy (P01)...	90	0.5
5	Sudden infant death syndrome (R95).....	62	0.4
6	Bacterial sepsis of newborn (P36).....	38	0.2
7	Newborn affected by complications of placenta, etc. (P02).....	32	0.2
8	Intrauterine hypoxia and birth asphyxia (P20-P21).....	26	0.2
9	Respiratory distress of newborn (P22).....	24	0.1
10	DZ of Circulatory System (I00 - I99).....	22	0.1
All Other Causes.....	384	0.1

Table 11-A. South Carolina Infant Death, Resident Data, 2017-2019, White

Rank	Cause of death	Number	Rate
All White Infant Deaths.....	529	4.7
1	Congenital malformations, deformations, etc. (Q00-Q99).....	125	1.1
2	Disorders related to short gestation and low birthweight (P07).....	63	0.6
3	Accidents (V01-X59,Y85-Y86).....	51	0.5
4	Sudden infant death syndrome (R95).....	26	0.2
5	Fetus and newborn affected by maternal complications of pregnancy (P01)...	21	0.2
6	Newborn affected by complications of placenta, etc. (P02).....	15	0.1
7	Intrauterine hypoxia and birth asphyxia (P20-P21).....	15	0.1
8	Bacterial sepsis of newborn (P36).....	14	0.1
9	Neonatal Hemorrhage (P50 - P52, P54).....	13	0.1
10	DZ of Circulatory System (I00 - I99).....	12	0.1
All Other Causes.....	174	1.5

Table 11-B. South Carolina Infant Death, Resident Data, 2017-2019, Black and Other

Rank	Cause of death	Number	Rate
All Black And Other Infant Deaths.....	638	11.0
1	Disorders related to short gestation and low birthweight (P07).....	115	2.0
2	Congenital malformations, deformations, etc. (Q00-Q99).....	84	1.4
3	Fetus and newborn affected by maternal complications of pregnancy (P01)...	69	1.2
4	Accidents (V01-X59,Y85-Y86).....	53	0.9
5	Sudden infant death syndrome (R95).....	35	0.6
6	Bacterial sepsis of newborn (P36).....	24	0.4
7	Newborn affected by complications of placenta, etc. (P02).....	17	0.3
8	Respiratory distress of newborn (P22).....	13	0.2
9	Influenza and Pneumonia (J10 - J18).....	11	0.2
10	Intrauterine hypoxia and birth asphyxia (P20-P21)	11	0.2
All Other Causes.....	203	3.5

¹Rates per 1,000 live births. Rates calculated with 20 or fewer deaths are unreliable and should be used cautiously.

Table 12.

Comparison of Characteristics for All Live Births, by Race¹
 Z-tests for differences in proportions³
 South Carolina, 2018 to 2019
 (Residence Data)

	2018		2019		Z-TEST	P-VALUE
	Percent	Number	Percent	Number		

MOTHER < 18 YEARS						
TOTAL ²	1.55	879	1.45	829	-1.3567	0.1749
White	1.25	466	1.19	445	-0.7407	0.4589
Black & Other	2.13	411	1.96	382	-1.2224	0.2216

MARITAL STATUS: UNMARRIED						
TOTAL ²	45.97	26,052	46.47	26,509	1.6845	0.0921
White	32.85	12,263	33.45	12,521	1.7468	0.0807
Black & Other	71.48	13,780	71.47	13,955	-0.0255	0.9797

OBESE PRIOR TO PREGNANCY						
TOTAL ²	32.92	18,655	33.61	19,172	2.4668	0.0136
White	27.89	10,413	28.56	10,691	2.0295	0.0424
Black & Other	42.71	8,234	43.34	8,462	1.2436	0.2136

TOBACCO USE DURING PREGNANCY						
TOTAL ²	8.20	4,646	7.38	4,211	-5.1375	0.0000
White	9.68	3,615	8.72	3,263	-4.5706	0.0000
Black & Other	5.34	1,030	4.85	946	-2.2314	0.0257

HISPANIC MOTHER						
TOTAL ²	9.06	5,136	9.80	5,593	4.2763	0.0000
White	12.75	4,759	13.67	5,118	3.7348	0.0002
Black & Other	1.96	377	2.43	475	3.2063	0.0013

VERY LOW BIRTHWEIGHT						
TOTAL ²	1.72	975	1.83	1,042	1.3554	0.1753
White	1.05	391	1.19	444	1.8056	0.0710
Black & Other	3.02	582	3.03	592	0.0740	0.9410

LOW BIRTHWEIGHT						
TOTAL ²	9.61	5,443	9.86	5,622	1.4250	0.1542
White	7.04	2,630	7.21	2,699	0.8795	0.3791
Black & Other	14.56	2,806	14.91	2,911	0.9806	0.3268

¹Race of mother

²Includes unknown race

³Proportions are expressed as percentages

Table 12. (continued)

Comparison of Characteristics for All Live Births, by Race¹
 Z-tests for differences in proportions³
 South Carolina, 2018 to 2019
 (Residence Data)

	2018		2019		Z-TEST	P-VALUE
	Percent	Number	Percent	Number		
PREMATURE BIRTHS (< 37 WEEKS)						
TOTAL ²	11.34	6,426	11.46	6,537	0.6358	0.5249
White	9.60	3,584	9.85	3,686	1.1390	0.2547
Black & Other	14.69	2,832	14.53	2,837	-0.4489	0.6535
VERY PREMATURE BIRTHS (< 32 WEEKS)						
TOTAL ²	1.91	1,085	2.01	1,146	1.1466	0.2516
White	1.25	468	1.35	507	1.2152	0.2243
Black & Other	3.19	615	3.24	633	0.2884	0.7730
PREMATURE 32-36 WEEKS BIRTHS						
TOTAL ²	9.43	5,341	9.45	5,391	0.1472	0.8830
White	8.35	3,116	8.49	3,179	0.7189	0.4722
Black & Other	11.50	2,217	11.29	2,204	-0.6592	0.5098
KOTELCHUCK INDEX: ADEQUATE, ADEQUATE PLUS						
TOTAL ²	76.69	43,456	78.27	44,651	6.4157	0.0000
White	79.14	29,545	80.15	30,002	3.4274	0.0006
Black & Other	72.01	13,882	74.83	14,610	6.2741	0.0000
KOTELCHUCK INDEX: INADEQUATE						
TOTAL ²	17.56	9,952	16.44	9,376	-5.0522	0.0000
White	15.37	5,740	14.73	5,514	-2.4654	0.0137
Black & Other	21.74	4,191	19.64	3,834	-5.1176	0.0000
< 5 PRENATAL CARE VISITS						
TOTAL ²	6.06	3,434	5.20	2,969	-6.2544	0.0000
White	5.11	1,909	4.63	1,734	-3.0555	0.0022
Black & Other	7.85	1,514	6.26	1,222	-6.1372	0.0000
PRENATAL CARE BEGAN FIRST TRIMESTER						
TOTAL ²	73.03	41,385	74.45	42,469	5.4368	0.0000
White	75.80	28,300	76.64	28,689	2.6869	0.0072
Black & Other	67.75	13,060	70.35	13,735	5.5322	0.0000

¹Race of mother²Includes unknown race³Proportions are expressed as percentages

Table 12-A.

Comparison of Characteristics of Infants who Died, by Race¹
 Z-tests for differences in proportions³
 South Carolina, 2018 to 2019
 (Residence Data)

	2018		2019		Z-TEST	P-VALUE
	Percent	Number	Percent	Number		
MOTHER < 18 YEARS						
TOTAL ²	2.96	12	2.05	8	-0.8208	0.4118
White	1.04	2	1.16	2	0.1048	0.9165
Black & Other	4.67	10	2.75	6	-1.0568	0.2906
MARITAL STATUS: UNMARRIED						
TOTAL ²	58.62	238	59.59	233	0.2785	0.7807
White	38.54	74	36.99	64	-0.3044	0.7608
Black & Other	76.64	164	77.52	169	0.2194	0.8263
OBESE PRIOR TO PREGNANCY						
TOTAL ²	41.87	170	37.85	148	-1.1587	0.2466
White	33.85	65	27.17	47	-1.3831	0.1666
Black & Other	49.07	105	46.33	101	-0.5691	0.5693
TOBACCO USE DURING PREGNANCY						
TOTAL ²	10.34	42	11.51	45	0.5269	0.5983
White	14.58	28	15.61	27	0.2730	0.7849
Black & Other	6.54	14	8.26	18	0.6804	0.4962
HISPANIC MOTHER						
TOTAL ²	7.14	29	7.42	29	0.1489	0.8816
White	11.98	23	14.45	25	0.6977	0.4854
Black & Other	2.80	6	1.83	4	-0.6696	0.5031
VERY LOW BIRTHWEIGHT						
TOTAL ²	50.00	203	52.17	204	0.6138	0.5394
White	41.67	80	42.20	73	0.1024	0.9184
Black & Other	57.48	123	60.09	131	0.5521	0.5809
LOW BIRTHWEIGHT						
TOTAL ²	66.01	268	68.80	269	0.8393	0.4013
White	58.85	113	61.85	107	0.5840	0.5592
Black & Other	72.43	155	74.31	162	0.4425	0.6581

¹Race of mother

²Includes unknown race

³Proportions are expressed as percentages

Table 12-A. (continued)

Comparison of Characteristics of Infants who Died, by Race¹

Z-tests for differences in proportions³

South Carolina, 2018 to 2019

(Residence Data)

	2018		2019		Z-TEST	P-VALUE
	Percent	Number	Percent	Number		

PREMATURE BIRTHS (< 37 WEEKS)						
TOTAL ²	68.47	278	66.75	261	-0.5191	0.6037
White	64.06	123	59.54	103	-0.8889	0.3740
Black & Other	72.43	155	72.48	158	0.0110	0.9912

VERY PREMATURE BIRTHS (< 32 WEEKS)						
TOTAL ²	51.72	210	52.43	205	0.1993	0.8420
White	43.23	83	41.62	72	-0.3109	0.7559
Black & Other	59.35	127	61.01	133	0.3531	0.7240

PREMATURE 32-36 WEEKS BIRTHS						
TOTAL ²	16.75	68	14.32	56	-0.9448	0.3448
White	20.83	40	17.92	31	-0.7023	0.4825
Black & Other	13.08	28	11.47	25	-0.5119	0.6087

KOTELCHUCK INDEX: ADEQUATE, ADEQUATE PLUS						
TOTAL ²	64.29	261	63.43	248	-0.2522	0.8009
White	64.06	123	59.54	103	-0.8889	0.3740
Black & Other	64.49	138	66.51	145	0.4433	0.6575

KOTELCHUCK INDEX: INADEQUATE						
TOTAL ²	27.59	112	29.16	114	0.4915	0.6230
White	27.08	52	31.79	55	0.9868	0.3238
Black & Other	28.04	60	27.06	59	-0.2264	0.8209

< 5 PRENATAL CARE VISITS						
TOTAL ²	27.34	111	35.55	139	2.4972	0.0125
White	21.35	41	33.53	58	2.6117	0.0090
Black & Other	32.71	70	37.16	81	0.9689	0.3326

PRENATAL CARE BEGAN FIRST TRIMESTER						
TOTAL ²	59.61	242	55.75	218	-1.1003	0.2712
White	60.42	116	54.34	94	-1.1737	0.2405
Black & Other	58.88	126	56.88	124	-0.4205	0.6742

¹Race of mother

²Includes unknown race

³Proportions are expressed as percentages

Table 13.
Multiple Births Trends
South Carolina, 2015-2019
(Residence Data)

Year	Singleton Births	Singleton Deaths	Infant Mortality Rate ¹	Twin Births	Twin Deaths	Infant Mortality Rate ¹	Higher Order (3+) Births	Higher Order (3+) Deaths	Infant Mortality Rate ¹	Total Births ²	Total Deaths ²	Infant Mortality Rate ¹
2015	56,006	352	6.3	2,085	48	23.0	44	5	113.6	58,135	405	7.0
2016	55,197	344	6.2	2,063	51	24.7	77	6	77.9	57,337	401	7.0
2017	55,028	319	5.8	1,950	42	21.5	52	4	76.9	57,030	371	6.5
2018	54,784	352	6.4	1,860	49	26.3	24	4	166.7	56,668	406	7.2
2019	55,089	340	6.2	1,892	38	20.1	63	10	158.7	57,044	391	6.9
Total	276,104	1,707	6.2	9,850	228	23.1	260	29	111.5	286,214	1,974	6.9

¹Rates are per 1,000 births. Rates calculated with 20 or fewer deaths are unreliable and should be used cautiously

²Includes unknown plurality

Table 14.
Infant Mortality Rates¹ by Race² and Birthweight³ Group
South Carolina
2017, 2018, and 2019
(Residence Data)

Infant Mortality for Very Low Birthweight (0-1499 grams)									
	Total			White			Black & Other		
Year	Number of Live Births	Number of Infant Deaths	Rate	Number of Live Births	Number of Infant Deaths	Rate	Number of Live Births	Number of Infant Deaths	Rate
2017	1,020*	187	183.3	418	80	191.4	600	107	178.3
2018	975*	203	208.2	391	80	204.6	582	123	211.3
2019	1042*	205	196.7	444	73	164.4	592	132	223.0

Infant Mortality for Intermediate Low Birthweight (1500-2499 grams)									
	Total			White			Black & Other		
Year	Number of Live Births	Number of Infant Deaths	Rate	Number of Live Births	Number of Infant Deaths	Rate	Number of Live Births	Number of Infant Deaths	Rate
2017	4,501*	57	12.7	2,276	34	14.9	2,224	23	10.3
2018	4,468*	65	14.5	2,239	33	14.7	2,224	32	14.4
2019	4,580*	65	14.2	2,255	34	15.1	2,319	31	13.4

Infant Mortality for Normal Birthweight (2500+ grams)									
	Total			White			Black & Other		
Year	Number of Live Births	Number of Infant Deaths	Rate	Number of Live Births	Number of Infant Deaths	Rate	Number of Live Births	Number of Infant Deaths	Rate
2017	51,503*	121	2.3	34,903	81	2.3	16,561	40	3.5
2018	51,215*	132	2.6	34,697	74	2.1	16,469	58	3.5
2019	51,410*	119	2.3	34,731	63	1.8	16,613	56	3.4

¹Rates per 1,000 live births

²Race of mother

³Does not include missing birthweight

*Includes unknown race

Table 14-A.
 Neonatal Mortality Rates¹ by Race² and Birthweight³ Group
 South Carolina
 2017, 2018, and 2019
 (Residence Data)

Neonatal Mortality for Very Low Birthweight (0-1499 grams)									
	Total			White			Black & Other		
Year	Number of Live Births	Number of Infant Deaths	Rate	Number of Live Births	Number of Infant Deaths	Rate	Number of Live Births	Number of Infant Deaths	Rate
2017	1,020*	158	154.9	418	67	160.3	600	91	151.7
2018	975*	176	180.5	391	66	168.8	582	110	189.0
2019	1,042*	182	174.7	444	65	146.4	592	117	197.6

Neonatal Mortality for Intermediate Low Birthweight (1500-2499 grams)									
	Total			White			Black & Other		
Year	Number of Live Births	Number of Infant Deaths	Rate	Number of Live Births	Number of Infant Deaths	Rate	Number of Live Births	Number of Infant Deaths	Rate
2017	4,501*	33	7.3	2,276	24	10.5	2,224	9	4.0
2018	4,468*	42	9.4	2,239	25	11.2	2,224	17	7.6
2019	4,580*	34	7.4	2,255	19	8.4	2,319	15	6.5

Neonatal Mortality for Normal Birthweight (2500+ grams)									
	Total			White			Black & Other		
Year	Number of Live Births	Number of Infant Deaths	Rate	Number of Live Births	Number of Infant Deaths	Rate	Number of Live Births	Number of Infant Deaths	Rate
2017	51,503*	46	0.9	34,903	28	0.8	16,561	18	1.1
2018	51,215*	50	1.0	34,697	34	1.0	16,469	16	1.0
2019	51,410*	39	0.8	34,731	24	0.7	16,613	15	0.9

¹Rates per 1,000 live births

²Race of mother

³Does not include missing birthweight

*Includes unknown race

Table 14-B.
 Postneonatal Mortality Rates¹ by Race² and Birthweight³ Group
 South Carolina
 2017, 2018, and 2019
 (Residence Data)

Postneonatal Mortality for Very Low Birthweight (0-1499 grams)									
	Total			White			Black & Other		
Year	Number of Live Births	Number of Infant Deaths	Rate	Number of Live Births	Number of Infant Deaths	Rate	Number of Live Births	Number of Infant Deaths	Rate
2017	1,020*	29	28.4	418	13	31.1	600	16	26.7
2018	975*	27	27.7	391	14	31.1	582	13	26.7
2019	1,042*	23	22.1	444	8	18.0	592	15	25.3

Postneonatal Mortality for Intermediate Low Birthweight (1500-2499 grams)									
	Total			White			Black & Other		
Year	Number of Live Births	Number of Infant Deaths	Rate	Number of Live Births	Number of Infant Deaths	Rate	Number of Live Births	Number of Infant Deaths	Rate
2017	4,501*	24	5.3	2,276	10	4.4	2,224	14	6.3
2018	4,468*	23	5.1	2,239	8	3.6	2,224	15	6.7
2019	4,580*	31	6.8	2,255	15	6.7	2,319	16	6.9

Postneonatal Mortality for Normal Birthweight (2500+ grams)									
	Total			White			Black & Other		
Year	Number of Live Births	Number of Infant Deaths	Rate	Number of Live Births	Number of Infant Deaths	Rate	Number of Live Births	Number of Infant Deaths	Rate
2017	51,503*	75	1.5	34,903	51	1.5	16,561	24	1.4
2018	51,215*	82	1.6	34,697	40	1.2	16,469	42	2.6
2019	51,410*	80	1.6	34,731	39	1.1	16,613	41	2.5

¹Rates per 1,000 live births

²Race of mother

³Does not include missing birthweight

*Includes unknown race

Figure 1.
Percentage of Infant Deaths by Birthweight Group
South Carolina, 2017-2019 Residence Data

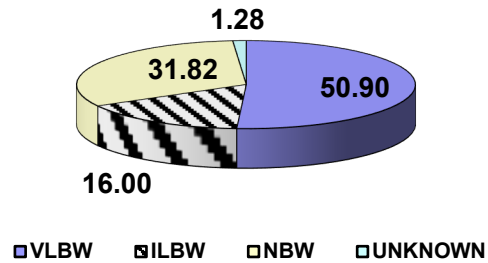


Figure 1-A.
Percentage of White Infant Deaths by Birthweight Group
South Carolina, 2017-2019 Residence Data

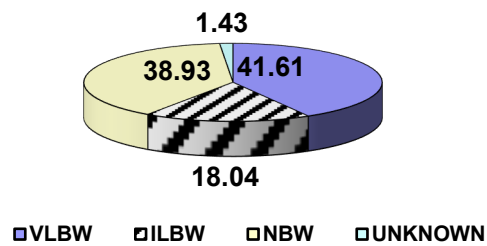


Figure 1-B.
Percentage of Black and Other Infant Deaths by Birthweight Group
South Carolina, 2017-2019
Residence Data

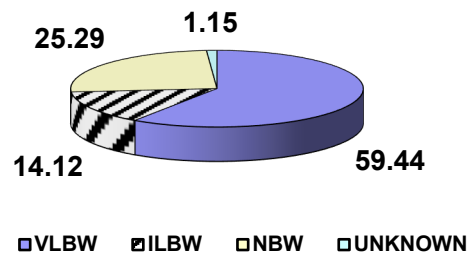
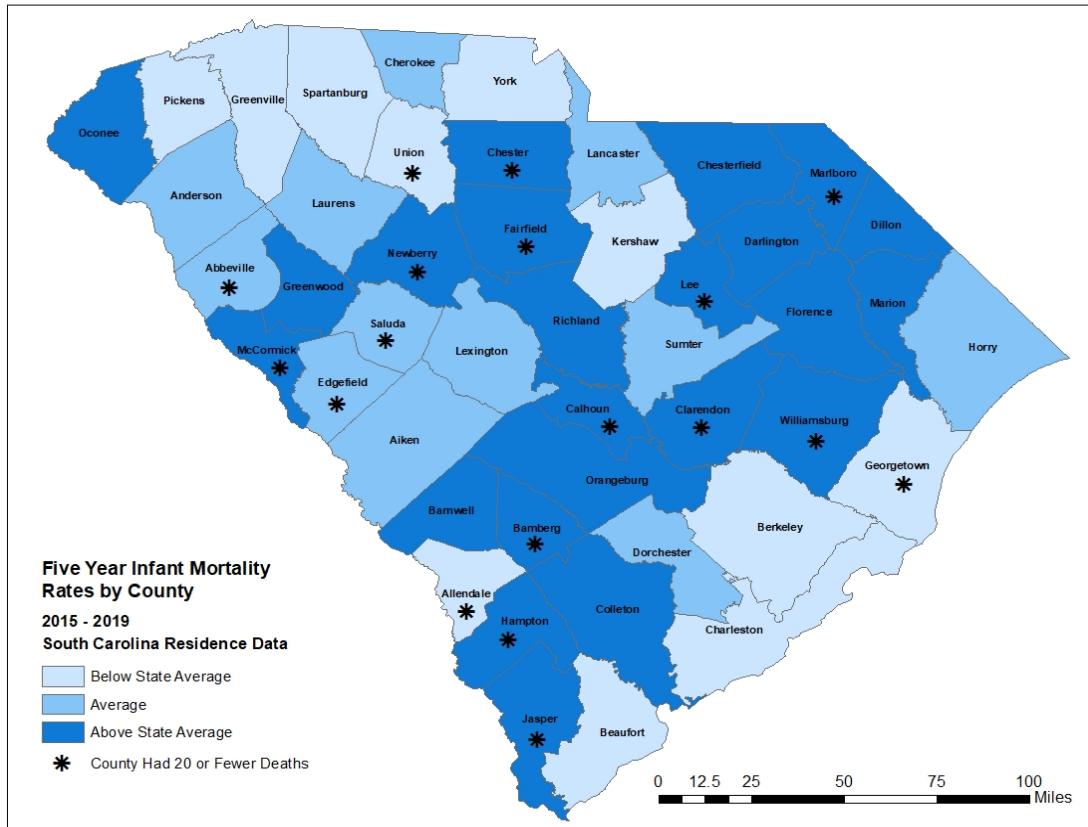


Figure 2.
Five Year Infant Mortality Rates¹ by County
South Carolina
2015-2019
(Residence Data)



Above State Average indicates a rate greater than 7.6.
State Average indicates a rate between 6.2 and 7.6 inclusive.
Below State Average indicates a rate lower than 6.2.

¹Rate per 1,000 live births. Rates calculated with 20 or fewer deaths are unreliable and should be used cautiously.